

GPOADmin®

Simplified Group Policy management and administration

As one of the most robust configuration tools in your Windows infrastructure, Group Policy plays a major role in establishing a secure and compliant networking environment for your users. But Group Policy regulates everything, from critical business processes and security settings to individual workstations and printers. This can make managing and administering Group Policy objects (GPOs) a time-consuming and expensive task — unless you have the right tools.

Award-winning Quest® GPOADmin® automates critical Group Policy management tasks to reduce costs and eliminate manual processes. GPOADmin can

optionally extend the Microsoft Group Policy Management Console (GPMC) so you can quickly use a familiar interface to administer GPO changes and verify, compare, update and roll back GPO versions over time to confirm the consistency of various GPO settings.

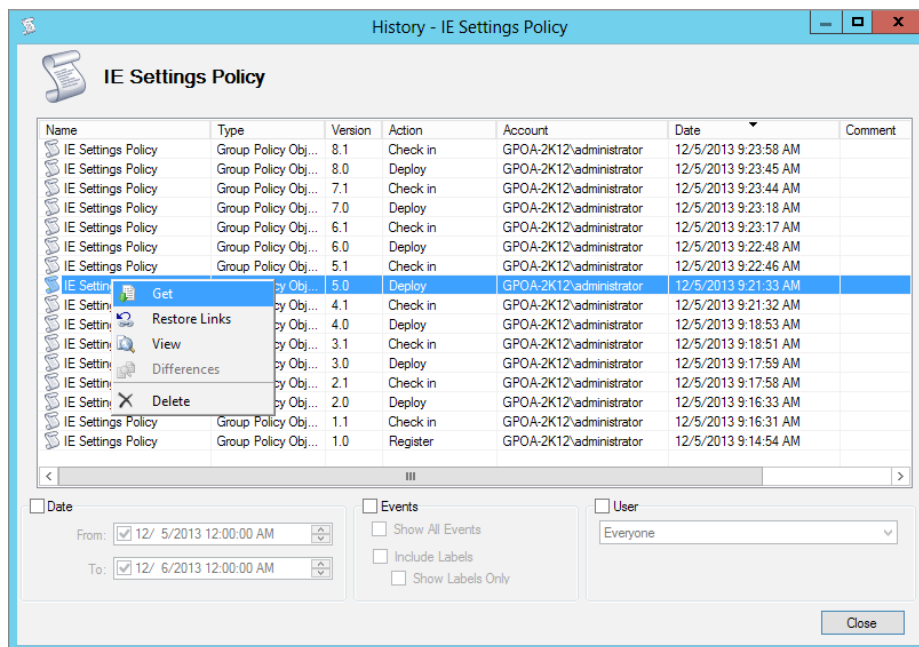
With so many GPO comparison features combined with enhanced security and workflow capabilities, you'll be able to more effectively control and manage your Windows infrastructure — while supporting change management best practices and driving compliance to corporate policies, regulatory standards and frameworks such as ITIL, MOF, SOX, Basel II, HIPAA and C-198.

“It is not always immediately obvious that changes to GPOs may have unintended consequences. Notification of GPO changes and the ability to roll back changes rapidly has been a useful feature when changes result in an impaired user experience.”

Mark Ayen, IT Manager, First County Bank

BENEFITS:

- Quickly verifies setting consistency and improves GPO auditing with side-by-side GPO version comparisons
- Protects GPOs from accidental modification
- Delivers a configurable GPO review and approval workflow with comments and email notifications
- Deploys changes as they're approved or on your schedule
- Automates administrative tasks with prepackaged PowerShell scripts
- Helps ensure compliance with ITIL, MOF, SOX, Basel II, HIPAA and C-198
- Supports change management best practices through workflow and automation



With GPOADmin, you can easily roll back GPOs to their previous versions, eliminating any ill effects of an undesired change.

SYSTEM REQUIREMENTS

PROCESSOR

2GHz CPU

MEMORY

8GB RAM

HARD DISK SPACE

1GB (prefer 50GB if backups and reports are stored on the same drive)

OPERATING SYSTEMS

Windows 7

Windows 8

Windows 8.1

Windows 10

Windows Server 2008

Windows Server 2008 R2

Windows Server 2012

Windows Server 2012 R2

Windows Server 2016

GPOADMIN REQUIREMENTS

.NET Framework 4.5 and 4.6

GPMC Extension compatible for the system where you are installing GPOAdmin

GPMC with Service Pack 1 or Remote Server Administration Tools

CONFIGURATION STORE REQUIREMENTS

Active Directory or ADAM/AD LDS

BACKUP STORE REQUIREMENTS

Network share (recommended)

Active Directory (not recommended)

ADAM/AD LDS

SQL Server

WATCHER SERVICE

Same system requirements as GPOAdmin

FEATURES

Improved and simplified native Group Policy capabilities

With no need for scripting or manual processes, you can save valuable time, reduce the risk of network outages, and drive improved server and desktop management throughout your entire enterprise. An optional GPOAdmin extension for Microsoft GPMC allows you to work in a familiar interface.

Improved security and increased reliability

Effective Group Policy auditing reduces security breaches and increases the overall reliability of your Windows infrastructure. GPOAdmin integrates with current processes — including Quest Change Auditor — to ensure that critical tasks such as version control and auditing are performed efficiently and effectively.

Streamlined compliance and rollback

GPOAdmin automatically ensures that all GPO versions and edits are recorded by creating a log of each setting change — including the individual who executed the change — for audit and rollback purposes. GPOAdmin is compliant with the Federal Information Processing Standard (FIPS) and supports Windows policy preference settings.

Automation and scripting

GPOAdmin includes prepackaged PowerShell scripts to automate administrative tasks, saving time and reducing the risk of error. Custom actions can be executed before or after a GPOAdmin change to facilitate integration with internal processes and systems.

Approval workflow and testing

Approval-based workflows with optional email notifications ensure that modifications adhere to change management best practices. Approved changes can be immediately implemented or scheduled. Comments can be added to requests to accelerate reviews. GPOs can be tested before rolling them out to production.

Reduced backup footprint

GPOAdmin enables you to control the size of your backup store by deleting

versions you no longer need. Side-by-side comparisons simplify the process of determining which versions to keep or delete.

Protected Settings policies

Administrators can define a list of GPO settings with predetermined values that must exist and cannot be modified. Once the Protected Settings policy is applied to a GPOAdmin container, policies that are modified and become in violation will be blocked from being checked in.

Approval/rejection via email

Workflow requests to modify GPOs can be approved or rejected by email, without opening the GPOAdmin console. The email contains a settings report to help inform the approval decision.

Improved object management

Specific users can be assigned responsibility for specific policies, either at the object level or GPOAdmin container level. This helps all administrators identify who is responsible for managing specific policies.

Customized email templates

Email notifications can be customized with specific text and/or attachments for specific roles (such as help desk or senior management). For example, if an organization requires a change request form to be completed to modify a GPO, it can be attached to the email notification to streamline the process. When combined with auditing and object protection, GPOAdmin supports change management best practices.

ABOUT QUEST

At Quest, our purpose is to solve complex problems with simple solutions. We accomplish this with a philosophy focused on great products, great service and an overall goal of being simple to do business with. Our vision is to deliver technology that eliminates the need to choose between efficiency and effectiveness, which means you and your organization can spend less time on IT administration and more time on business innovation.